

Third Tier Management Chart  
Department: Children Schools and Families  
Team: Children's Social Care & Youth Inclusion

Contact Number: 0208 274 4901

Assistant Director of Children's Social  
Care & Youth Inclusion

**Head of Safeguarding and Care  
Planning**

Reports to: AD of Children's Social Care &  
Youth Inclusion  
Grade: MGTSNR-Mgt Grade 2  
Team: Children's Social Care & Youth  
Inclusion  
Position Type: Permanent  
Salary Bracket: £65,000 - £69,999  
Max Point: £73,524

Post Holder: Caroline Muller

**Service Manager MASH & Child  
Protection**

Reports to: AD of Children's Social Care &  
Youth Inclusion  
Grade: MGTSNR-Mgt Grade 2  
Team: Children's Social Care & Youth  
Inclusion  
Position Type: Permanent  
Salary Bracket: £65,000 - £69,999  
Max Point: £73,524

Post Holder: Nicole Miller

**Service Manager Family &  
Adolescent Services**

Reports to: AD of Children's Social Care &  
Youth Inclusion  
Grade: MGTSNR-Mgt Grade 2  
Team: Children's Social Care & Youth  
Inclusion  
Position Type: Permanent  
Salary Bracket: £ - £  
Max Point: £73,524

Post Holder: Agency Worker

**Service Manager Permanency  
Placements & LAC Services**

Reports to: AD of Children's Social Care &  
Youth Inclusion  
Grade: MGTSNR-Mgt Grade 2  
Team: Children's Social Care & Youth  
Inclusion  
Position Type: Permanent  
Salary Bracket: £65,000 - £69,999  
Max Point: £73,524

Post Holder: Elise McQueen

**Service Manager Access to Resources**

Reports to: AD of Children's Social Care &  
Youth Inclusion  
Grade: MGTSNR-Mgt Grade 2  
Team: Children's Social Care & Youth  
Inclusion  
Position Type: Permanent  
Salary Bracket: £70,000 - £74,999  
Max Point: £73,524

Post Holder: Liz Broughton

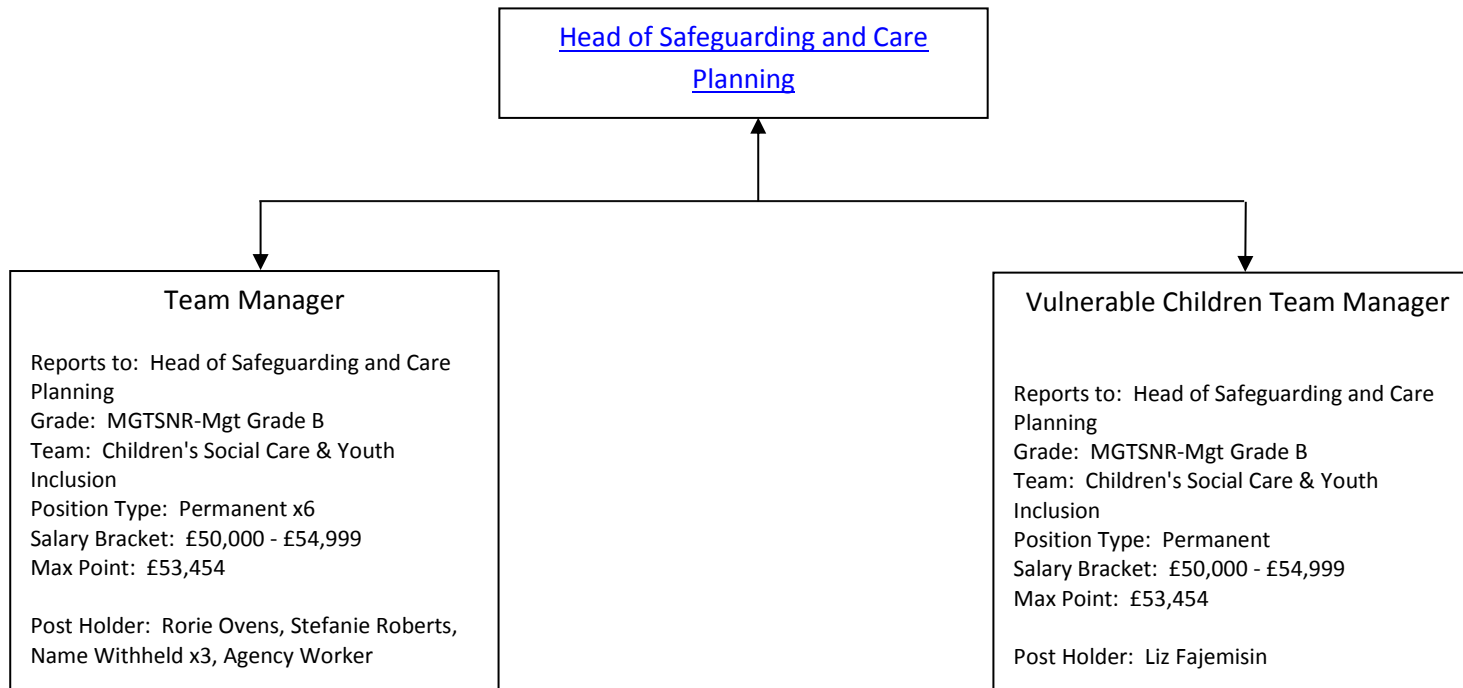
**Head of Quality Assurance and  
Practice Development**

Reports to: AD of Children's Social Care &  
Youth Inclusion  
Grade: MGTSNR-Mgt Grade 2  
Team: Children's Social Care & Youth  
Inclusion  
Position Type: Permanent  
Salary Bracket: £65,000 - £69,999  
Max Point: £73,524

Post Holder: Deborah Eaton

Third Tier Management Chart  
Department: Children Schools and Families  
Team: Children's Social Care & Youth Inclusion

Contact Number: 0208 274 4901



Third Tier Management Chart  
Department: Children Schools and Families  
Team: Children's Social Care & Youth Inclusion

Contact Number: 0208 274 4901

[Service Manager Family &  
Adolescent Services](#)

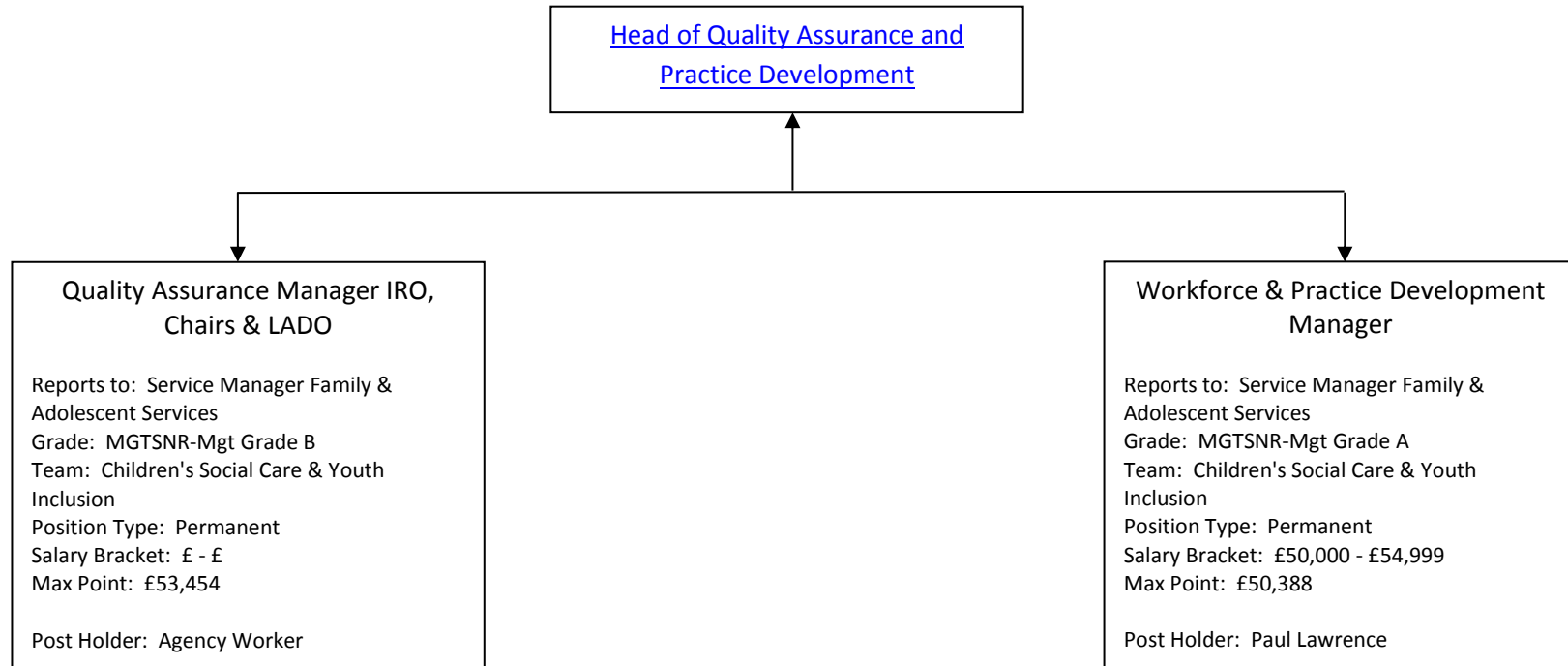
Youth Offending Team Manager

Reports to: Service Manager Family &  
Adolescent Services  
Grade: MGTSNR-Mgt Grade B  
Team: Children's Social Care & Youth  
Inclusion  
Position Type: Permanent  
Salary Bracket: £50,000 - £54,999  
Max Point: £53,454

Post Holder: Roberta Evans

Third Tier Management Chart  
Department: Children Schools and Families  
Team: Children's Social Care & Youth Inclusion

Contact Number: 0208 274 4901



Third Tier Management Chart  
Department: Children Schools and Families  
Team: Children's Social Care & Youth Inclusion

Contact Number: 0208 274 4901

[Service Manager Permanency  
Placements & LAC Services](#)

**Adoption Team Manager**

Reports to: Service Manager Permanency  
Placements & LAC Services  
Grade: MGTSNR-Mgt Grade B  
Team: Children's Social Care & Youth  
Inclusion  
Position Type: Permanent x 2  
Salary Bracket: £ - £  
Max Point: £53,454

Post Holder: Agency Worker x2

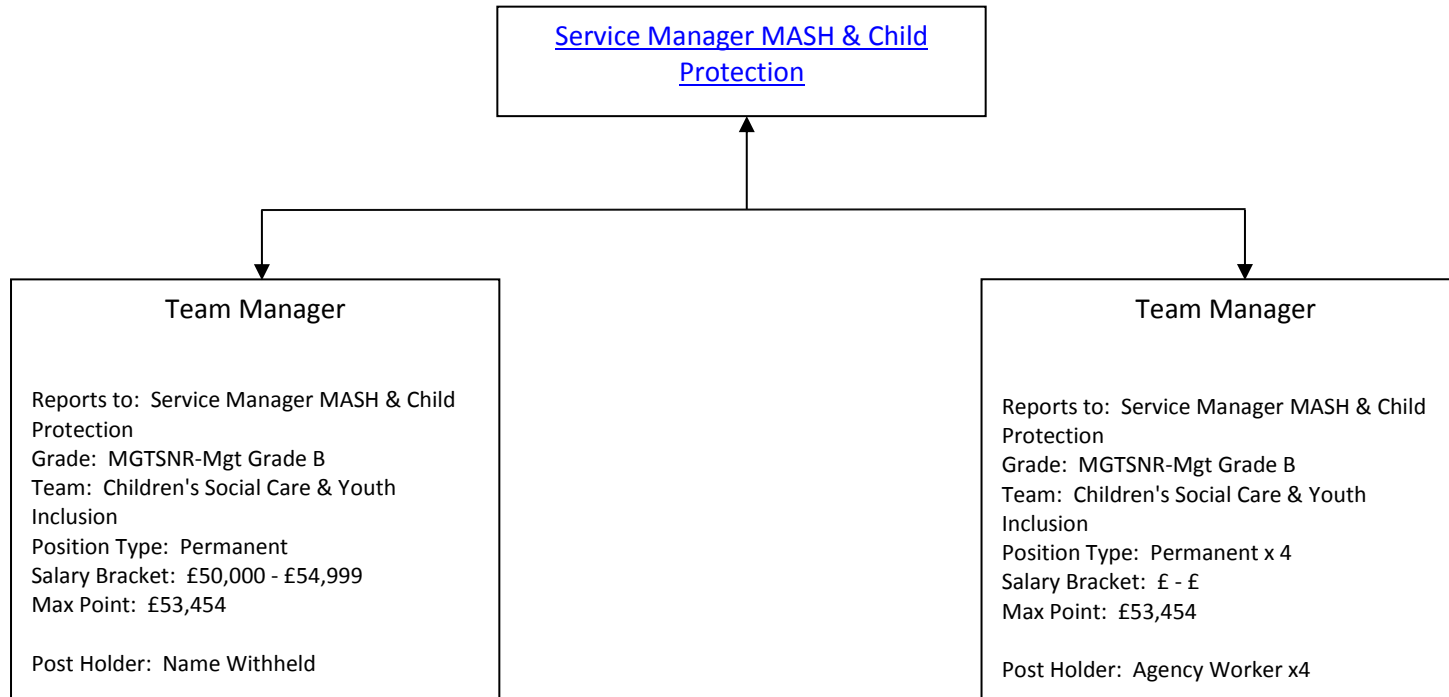
**Team Manager**

Reports to: Service Manager Permanency  
Placements & LAC Services  
Grade: MGTSNR-Mgt Grade B  
Team: Children's Social Care & Youth  
Inclusion  
Position Type: Permanent x 4  
Salary Bracket: £50,000 - £54,999  
Max Point: £53,454

Post Holder: Kenneth Yaskey, Name  
Withheld x2, Agency Worker

Third Tier Management Chart  
Department: Children Schools and Families  
Team: Children's Social Care & Youth Inclusion

Contact Number: 0208 274 4901



Third Tier Management Chart  
Department: Children Schools and Families  
Team: Children's Social Care & Youth Inclusion

Contact Number: 0208 274 4901

[Service Manager Access to Resources](#)

Team Manager

Reports to: Service Manager Access to Resources  
Grade: MGTSNR-Mgt Grade B  
Team: Children's Social Care & Youth Inclusion  
Position Type: Permanent x2  
Salary Bracket: £50,000 - £54,999  
Max Point: £53,454

Post Holder: Norma Page, Name Withheld

Contact Number: 0208 274 4901

[Assistant Director of Education](#)

**Service Manager SIS**

Reports to: Assistant Director of Education  
Grade: MGTSNR-Mgt Grade 2  
Team: Education Division  
Position Type: Permanent  
Salary Bracket: £65,000 - £69,999  
Max Point: £73,524  
  
Post Holder: Name Withheld

**Service Manager Early Years**

Reports to: Assistant Director of Education  
Grade: MGTSNR-Mgt Grade 2  
Team: Education Division  
Position Type: Permanent  
Salary Bracket: £70,000 - £74,999  
Max Point: £73,524  
  
Post Holder: Allison Jones

**Social Inclusion Manager**

Reports to: Assistant Director of Education  
Grade: MGTSNR-Mgt Grade 2  
Team: Education Division  
Position Type: Permanent  
Salary Bracket: £70,000 - £74,999  
Max Point: £73,524  
  
Post Holder: Keith Shipman

**Service Manager Contracts & School Organisation**

Reports to: Assistant Director of Education  
Grade: MGTSNR-Mgt Grade 2  
Team: Education Division  
Position Type: Permanent  
Salary Bracket: £70,000 - £74,999  
Max Point: £73,524  
  
Post Holder: Tom Procter

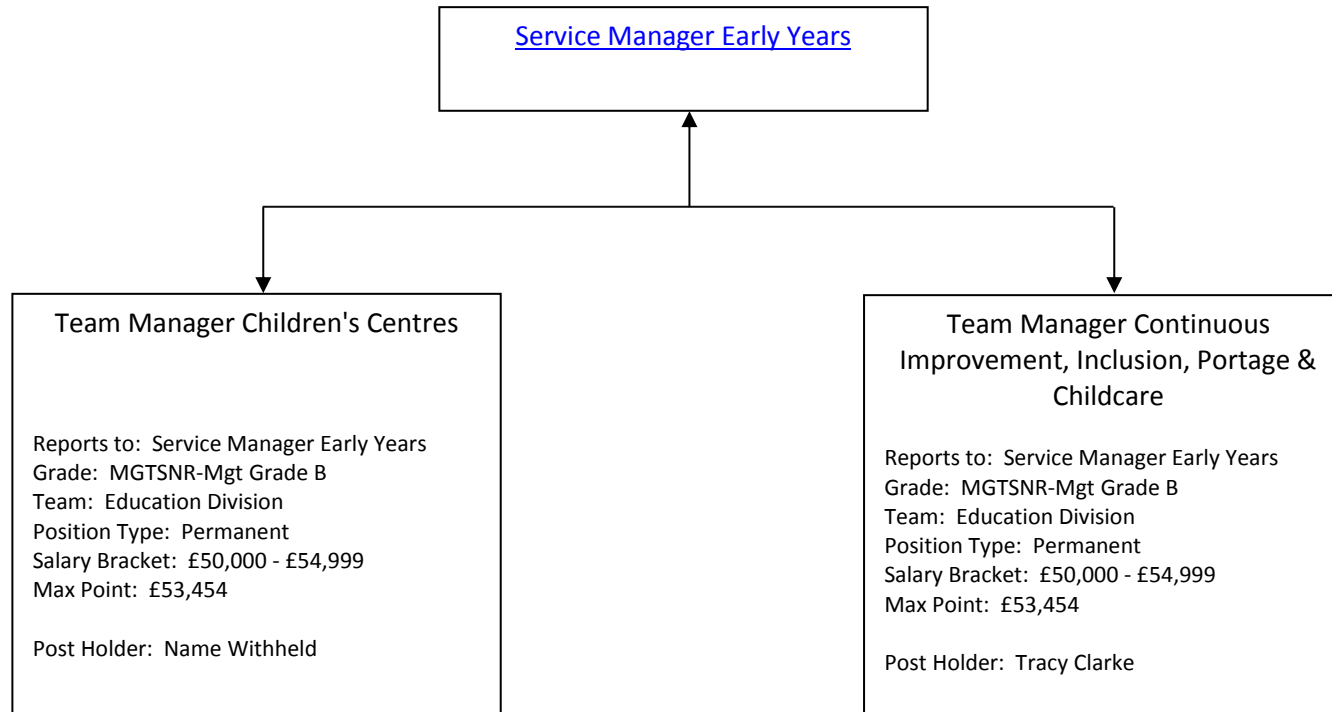
**Head of School Improvement**

Reports to: Assistant Director of Education  
Grade: SLBEIP-Advisors & Inspectors  
Team: Education Division  
Position Type: Permanent  
Salary Bracket: £70,000 - £74,999  
Max Salary: £93,225  
  
Post Holder: Elizabeth Fitzpatrick

**Head of Policy Planning & Performance**

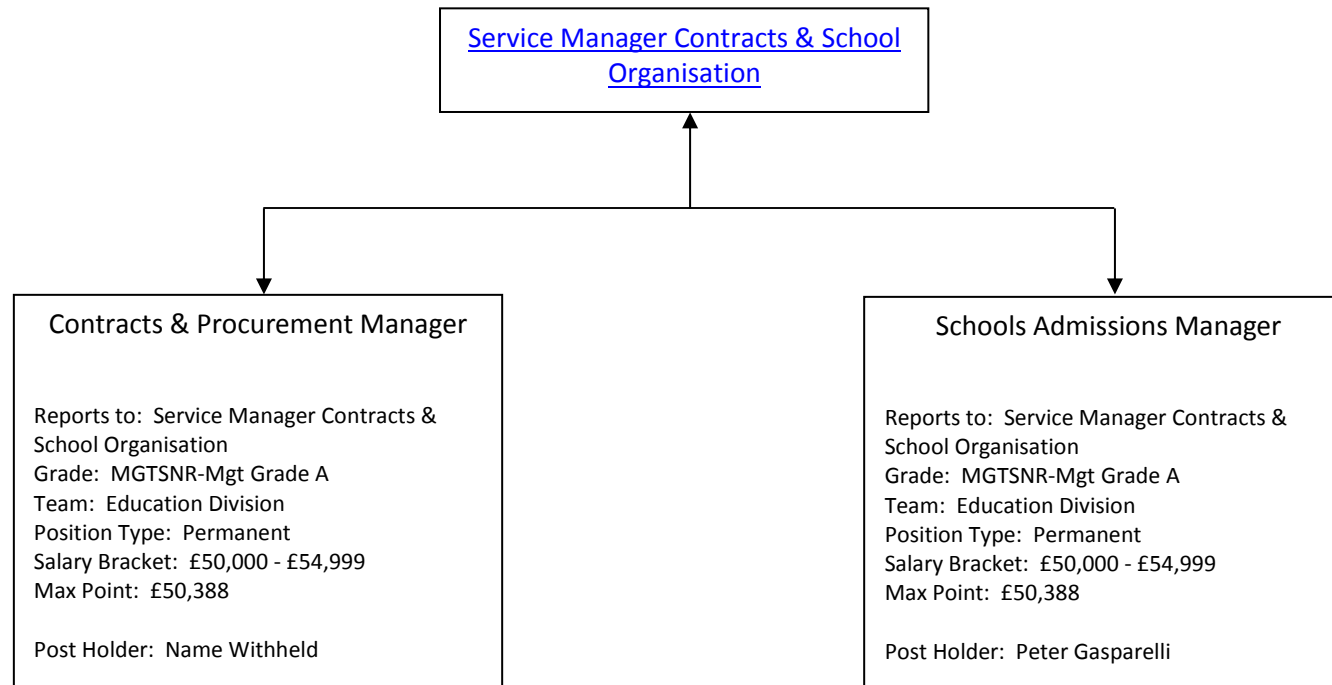
Reports to: Assistant Director of Education  
Grade: MGTSNR-Mgt Grade 2  
Team: Education Division  
Position Type: Permanent  
Salary Bracket: £ - £  
Max Point: £73,524  
  
Post Holder: Agency Worker

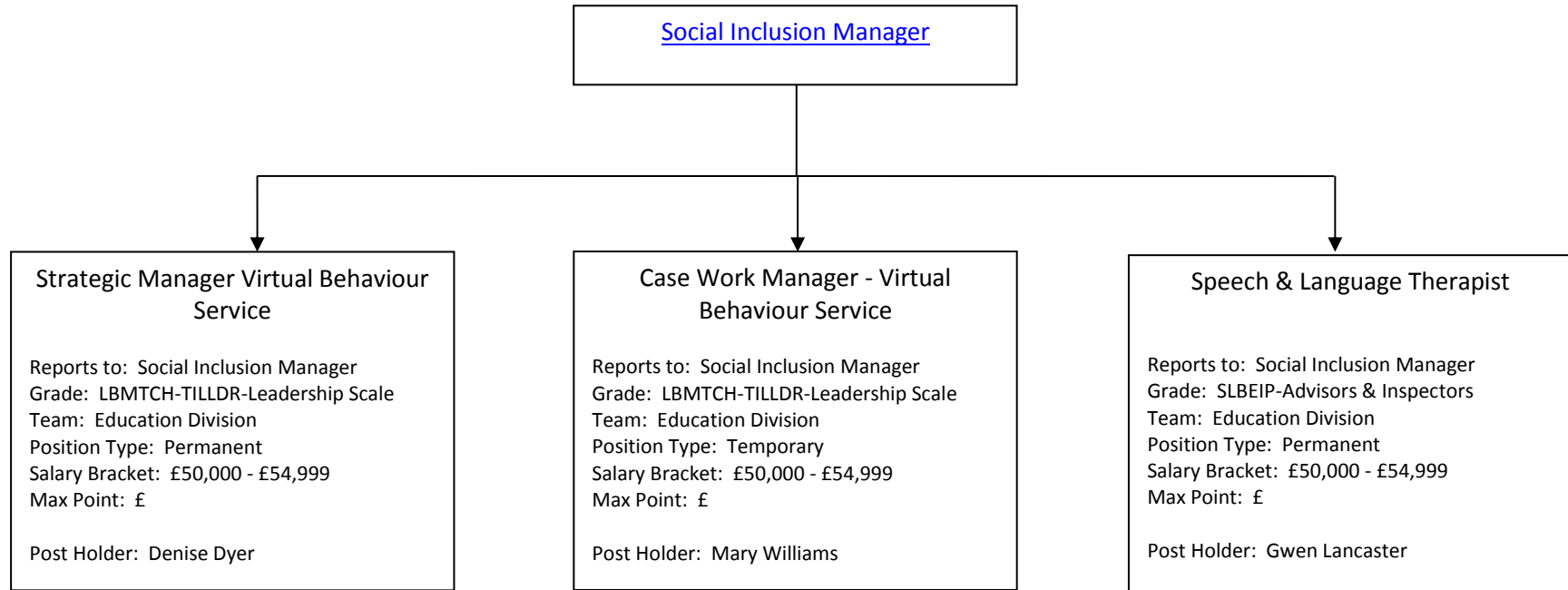




Third Tier Management Chart  
Department: Children Schools and Families  
Team: Education Division

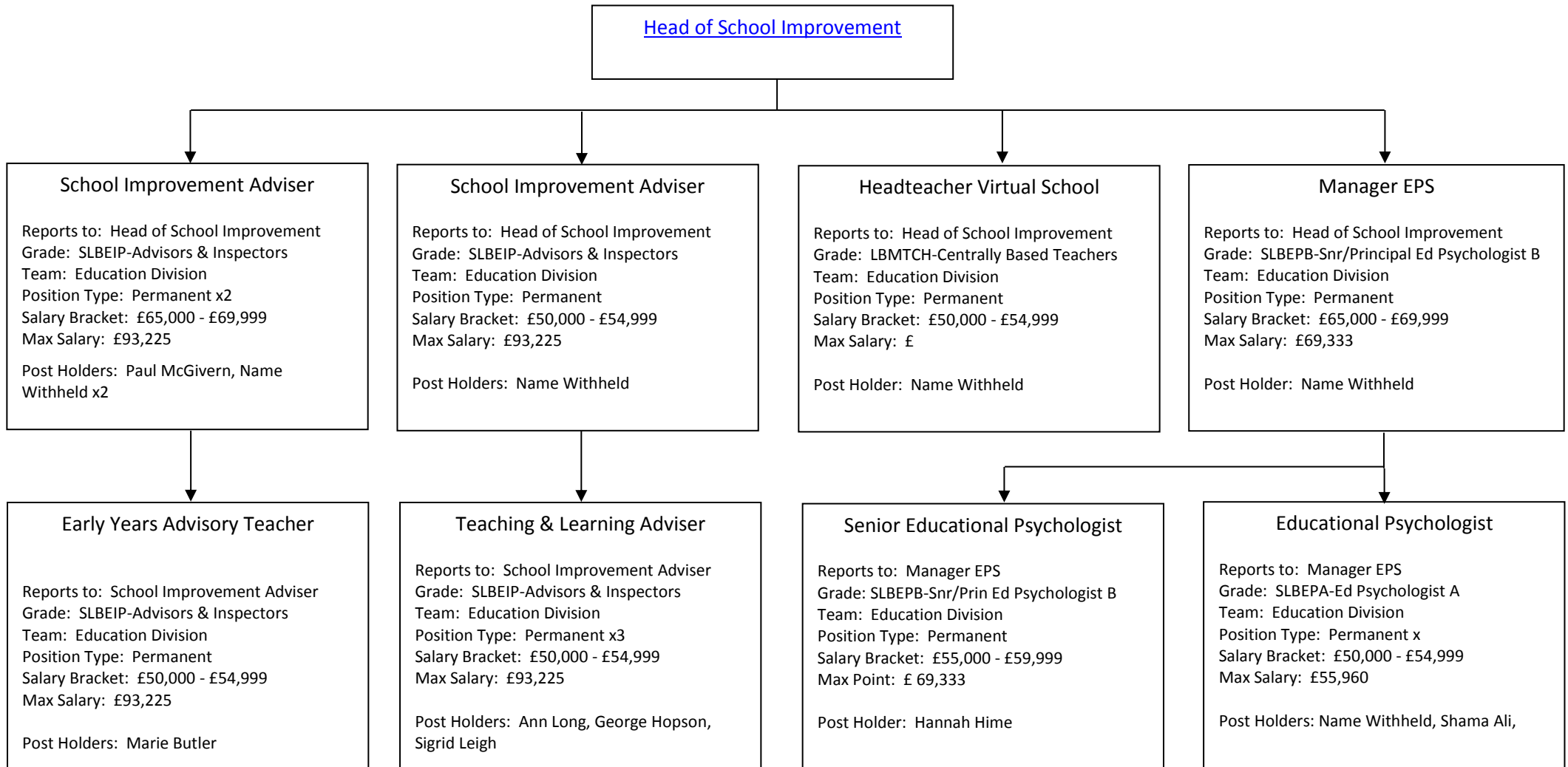
Contact Number: 0208 274 4901





Contact Number: 0208 274 4901

Head of School Improvement



Third Tier Management Chart  
Department: Children Schools and Families  
Team: Joint Commissioning & Partnerships

Contact Number: 0208 274 4901

[Service Manager CSF Commissioning](#)



Commissioning Manager

Reports to: Service Manager CSF  
Commissioning  
Grade: MGTSNR-Mgt Grade B  
Team: Joint Commissioning & Partnerships  
Position Type: Permanent x 2  
Salary Bracket: £50,000 - £54,999  
Max Point: £53,454  
  
Post Holder: Name Withheld x 2