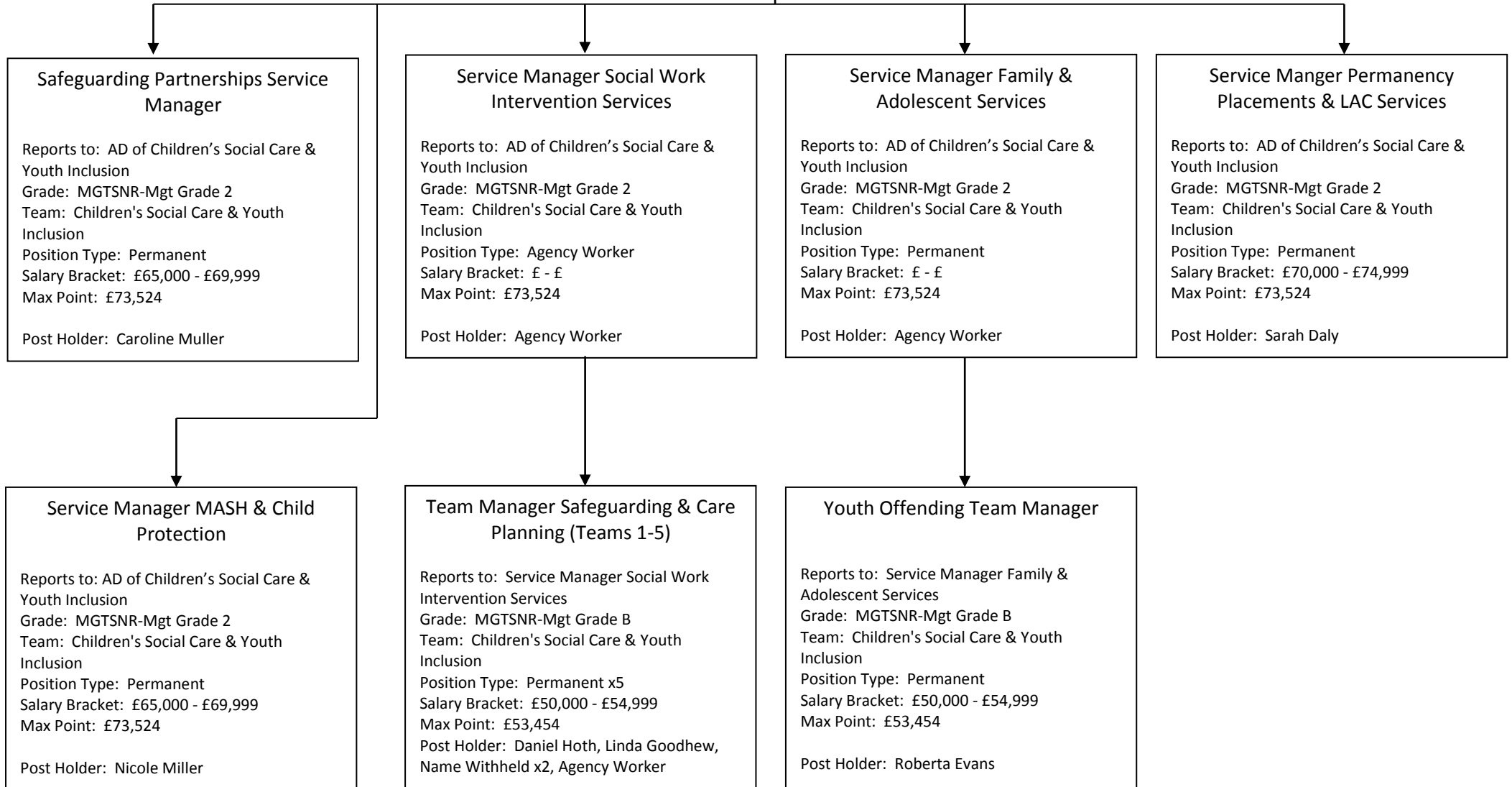


Third Tier Management Chart
Department: Children Schools and Families
Team: Children's Social Care & Youth Inclusion

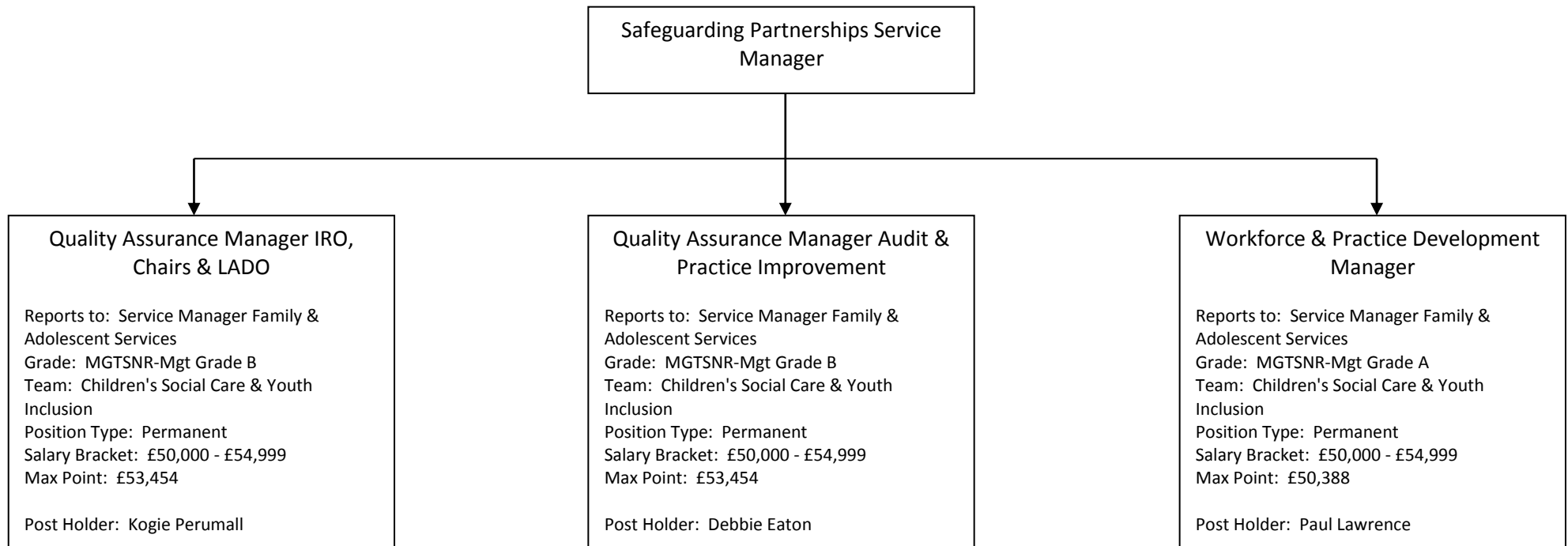
Contact Number: 0208 274 4901

[Assistant Director of Children's Social
Care & Youth Inclusion](#)



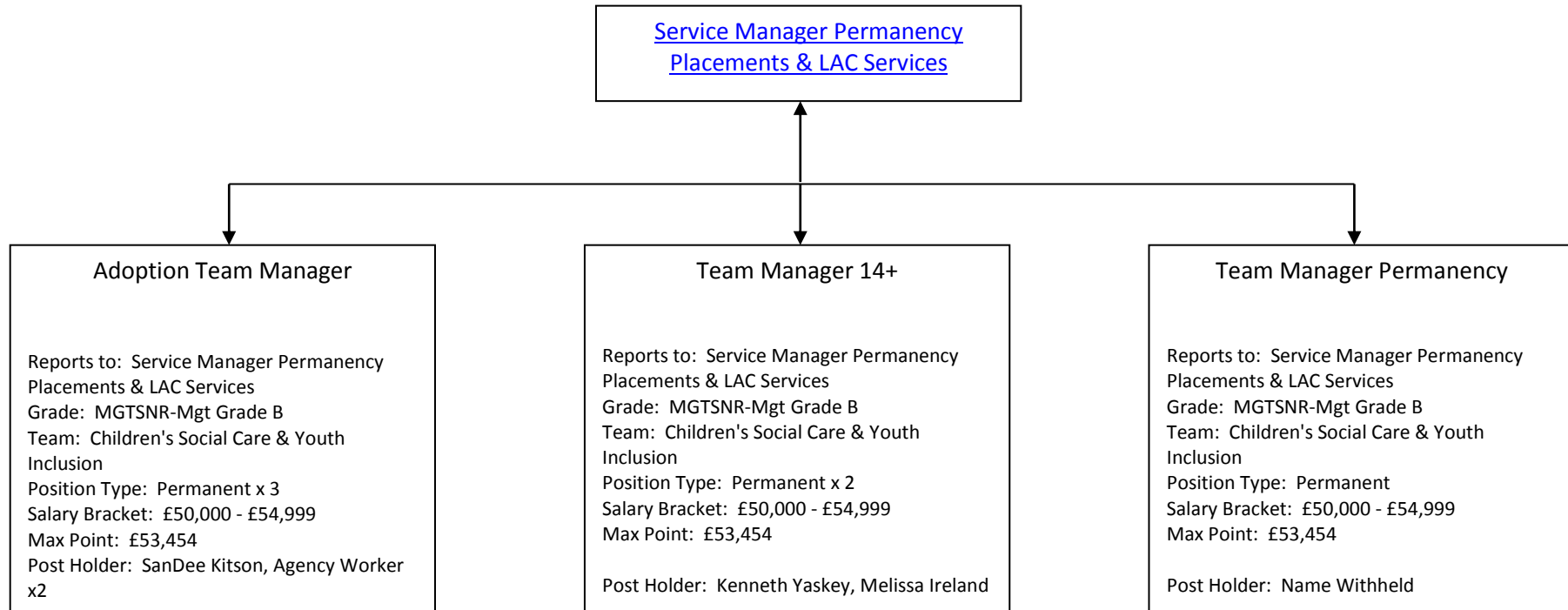
Third Tier Management Chart
Department: Children Schools and Families
Team: Children's Social Care & Youth Inclusion

Contact Number: 0208 274 4901



Third Tier Management Chart
Department: Children Schools and Families
Team: Children's Social Care & Youth Inclusion

Contact Number: 0208 274 4901



Third Tier Management Chart
Department: Children Schools and Families
Team: Children's Social Care & Youth Inclusion

Contact Number: 0208 274 4901

[Service Manager MASH & Child Protection](#)

Team Manager Family Support & Assessment

Reports to: Service Manager MASH & Child Protection
Grade: MGTSNR-Mgt Grade B
Team: Children's Social Care & Youth Inclusion
Position Type: Permanent
Salary Bracket: £50,000 - £54,999
Max Point: £53,454

Post Holder: Norma Page

Team Manager MASH

Reports to: Service Manager MASH & Child Protection
Grade: MGTSNR-Mgt Grade B
Team: Children's Social Care & Youth Inclusion
Position Type: Permanent x 2
Salary Bracket: £ - £
Max Point: £53,454

Post Holder: Agency Worker x2

Vulnerable Children Team Manager

Reports to: Service Manager MASH & Child Protection
Grade: MGTSNR-Mgt Grade B
Team: Children's Social Care & Youth Inclusion
Position Type: Permanent
Salary Bracket: £50,000 - £54,999
Max Point: £53,454

Post Holder: Elizabeth Fajemisin

Third Tier Management Chart
Department: Children Schools and Families
Team: Commissioning, Strategy and Performance Division

Contact Number: 0208 274 4901

Assistant Director of Commissioning
Strategy & Performance

Service Manager Access to Resources

Reports to: Assistant Director of C S & P
Grade: MGTSNR-Mgt Grade 2
Team: Commissioning, Strategy and
Performance Division
Position Type: Permanent
Salary Bracket: £70,000 - £74,999
Max Point: £73,524

Post Holder: Liz Broughton

**Service Manager Contracts & School
Organisation**

Reports to: Assistant Director of C S & P
Grade: MGTSNR-Mgt Grade 2
Team: Commissioning, Strategy and
Performance Division
Position Type: Permanent
Salary Bracket: £70,000 - £74,999
Max Point: £73,524

Post Holder: Tom Procter

Service Manager CSF Commissioning

Reports to: Assistant Director of C S & P
Grade: MGTSNR-Mgt Grade 2
Team: Commissioning, Strategy and
Performance Division
Position Type: Permanent
Salary Bracket: £55,000 - £59,999
Max Point: £73,524

Post Holder: Name Withheld

**Service Manager Policy Planning &
Performance**

Reports to: Assistant Director of C S & P
Grade: MGTSNR-Mgt Grade 2
Team: Commissioning, Strategy and
Performance Division
Position Type: Permanent
Salary Bracket: £70,000 - £74,999
Max Point: £73,524

Post Holder: Name Withheld

Schools Admissions Manager

Reports to: Service Manager Contracts &
School Organisation
Grade: MGTSNR-Mgt Grade A
Team: Commissioning, Strategy and
Performance Division
Position Type: Permanent
Salary Bracket: £50,000 - £54,999
Max Point: £50,388

Post Holder: Peter Gasparelli

Contracts & Procurement Manager

Reports to: Service Manager Contracts &
School Organisation
Grade: MGTSNR-Mgt Grade A
Team: Commissioning, Strategy and
Performance Division
Position Type: Permanent
Salary Bracket: £50,000 - £54,999
Max Point: £50,388

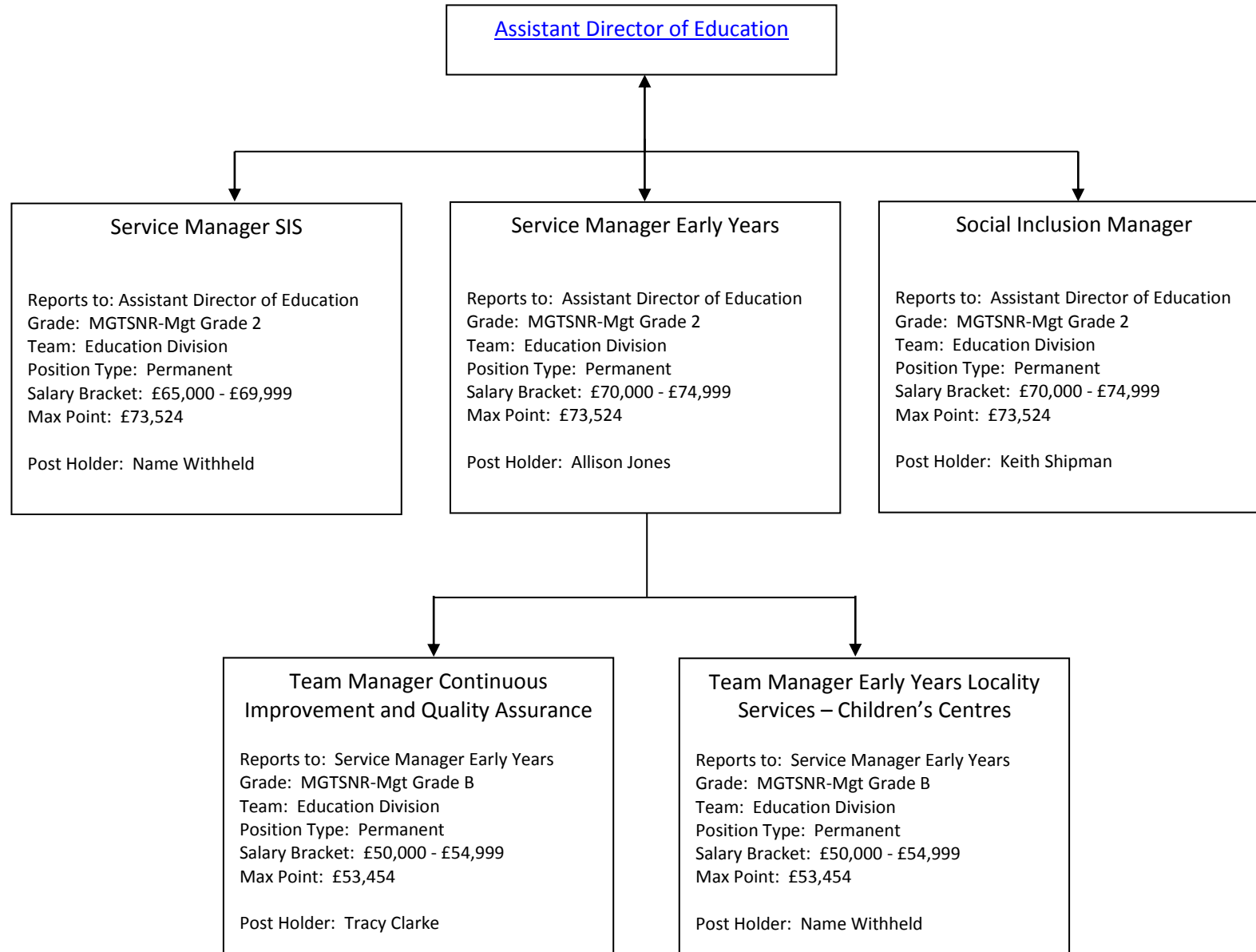
Post Holder: Name Withheld

Commissioning Manager

Reports to: Service Manager CSF
Commissioning
Grade: MGTSNR-Mgt Grade B
Team: Commissioning, Strategy and
Performance Division
Position Type: Permanent x 2
Salary Bracket: £50,000 - £54,999
Max Point: £53,454

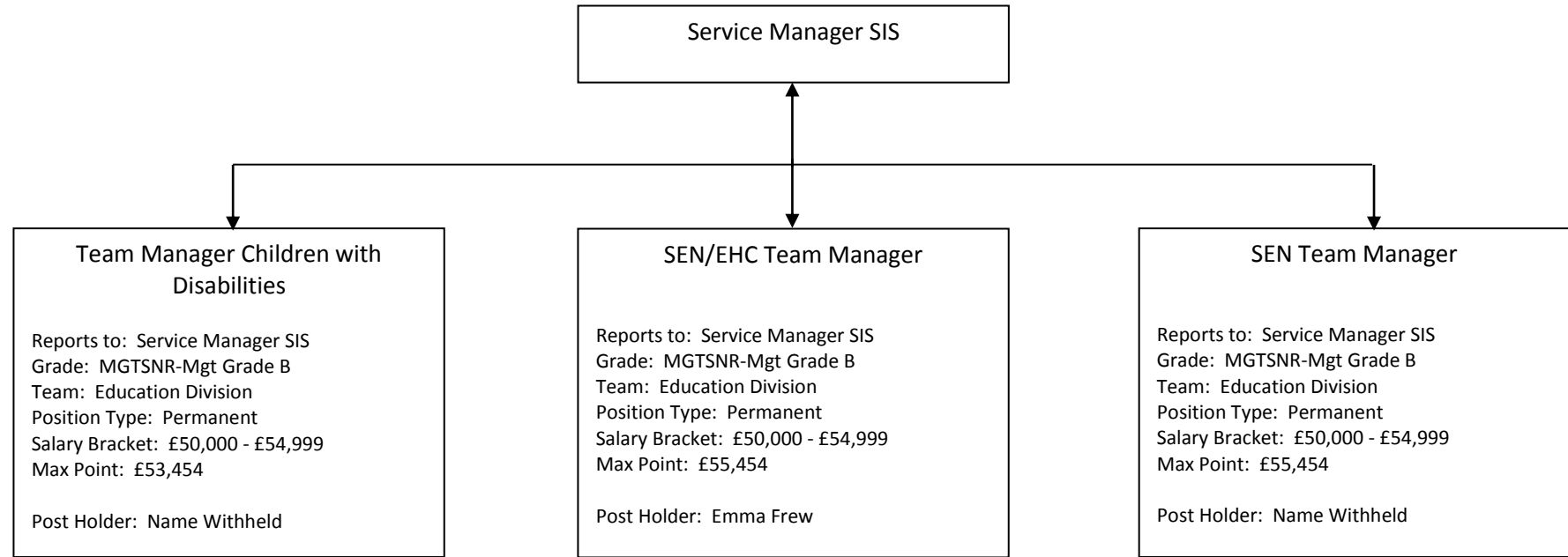
Post Holder: Name Withheld x 2

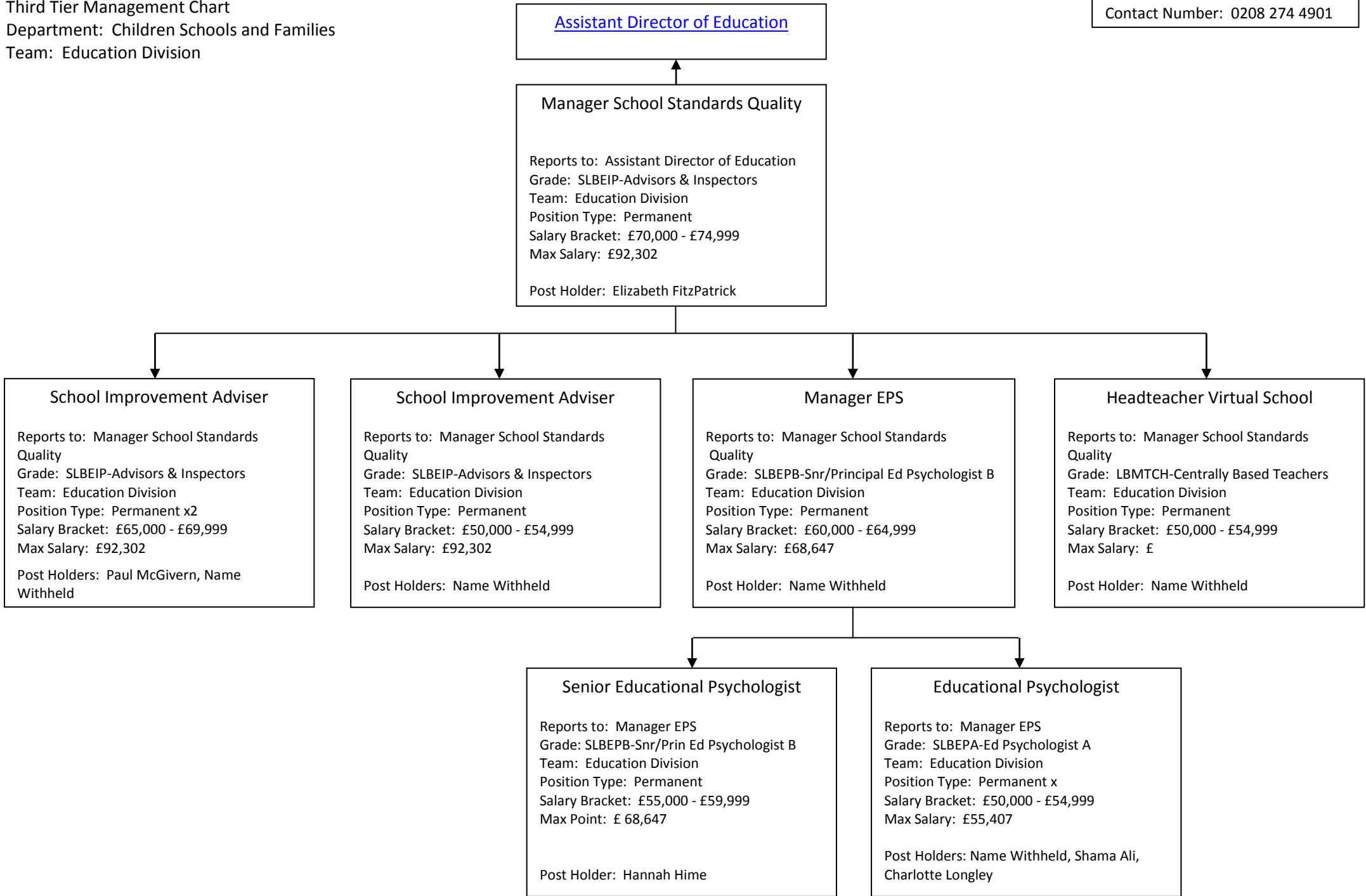
Contact Number: 0208 274 4901



Third Tier Management Chart
Department: Children Schools and Families
Team: Education Division

Contact Number: 0208 274 4901





Contact Number: 0208 274 4901

[Social Inclusion Manager](#)

School Inclusion Co-Ordinator

Reports to: Social Inclusion Manager
Grade: LBMTCH-TILLDR-Leadership Scale
Team: Education Division
Position Type: Permanent
Salary Bracket: £50,000 - £54,999
Max Point: £

Post Holder: Bev Selway

Case Work Manager - VBS

Reports to: Social Inclusion Manager
Grade: LBMTCH-TILLDR-Leadership Scale
Team: Education Division
Position Type: Temporary
Salary Bracket: £50,000 - £54,999
Max Point: £

Post Holder: Mary Williams

Speech & Language Therapist

Reports to: Social Inclusion Manager
Grade: SLBEIP-Advisors & Inspectors
Team: Education Division
Position Type: Permanent
Salary Bracket: £50,000 - £54,999
Max Point: £

Post Holder: Gwen Lancaster

Third Tier Management Chart
Department: Children Schools and Families
Team: Education Division

Contact Number: 0208 274 4901

