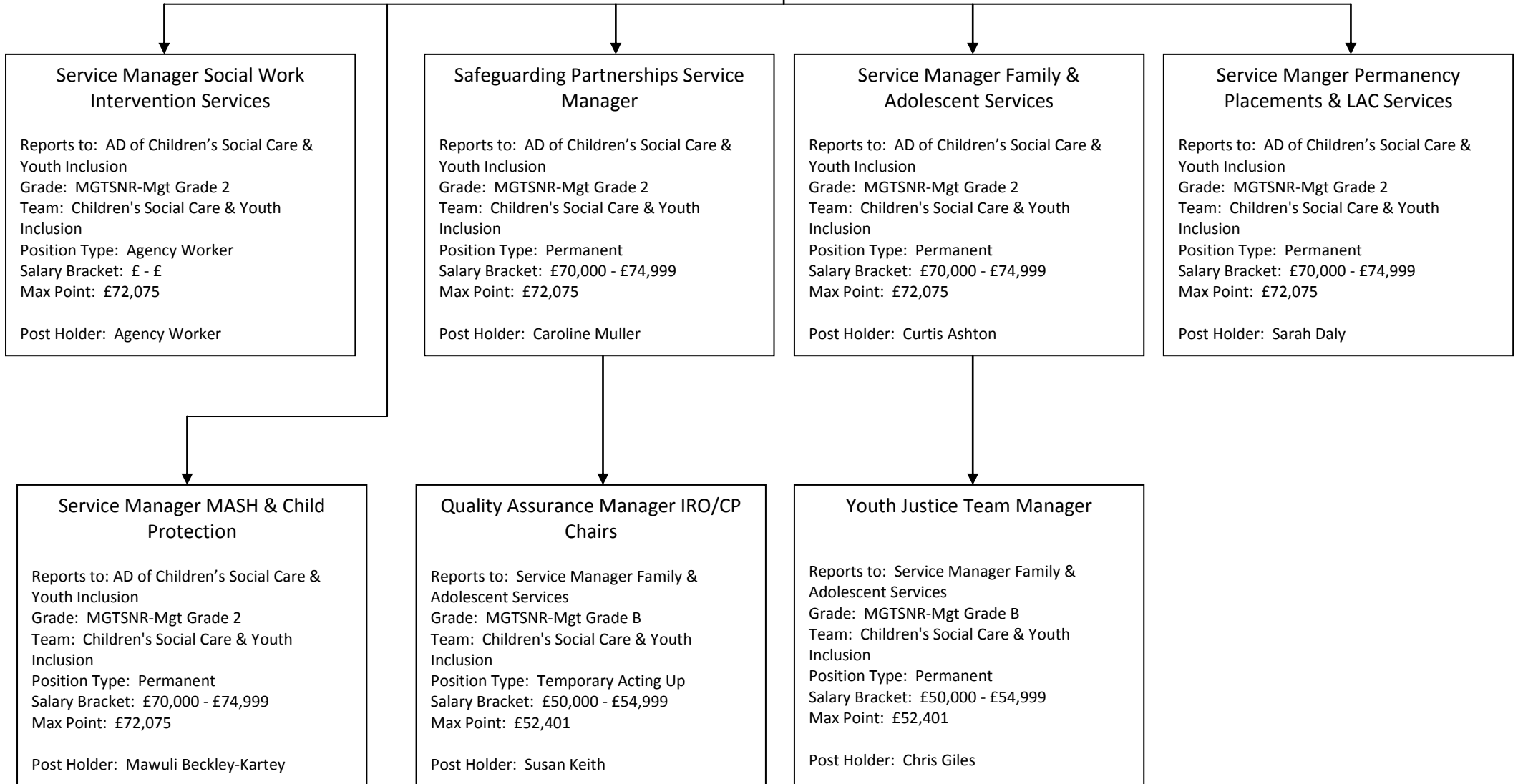


Third Tier Management Chart
Department: Children Schools and Families
Team: Children's Social Care & Youth Inclusion

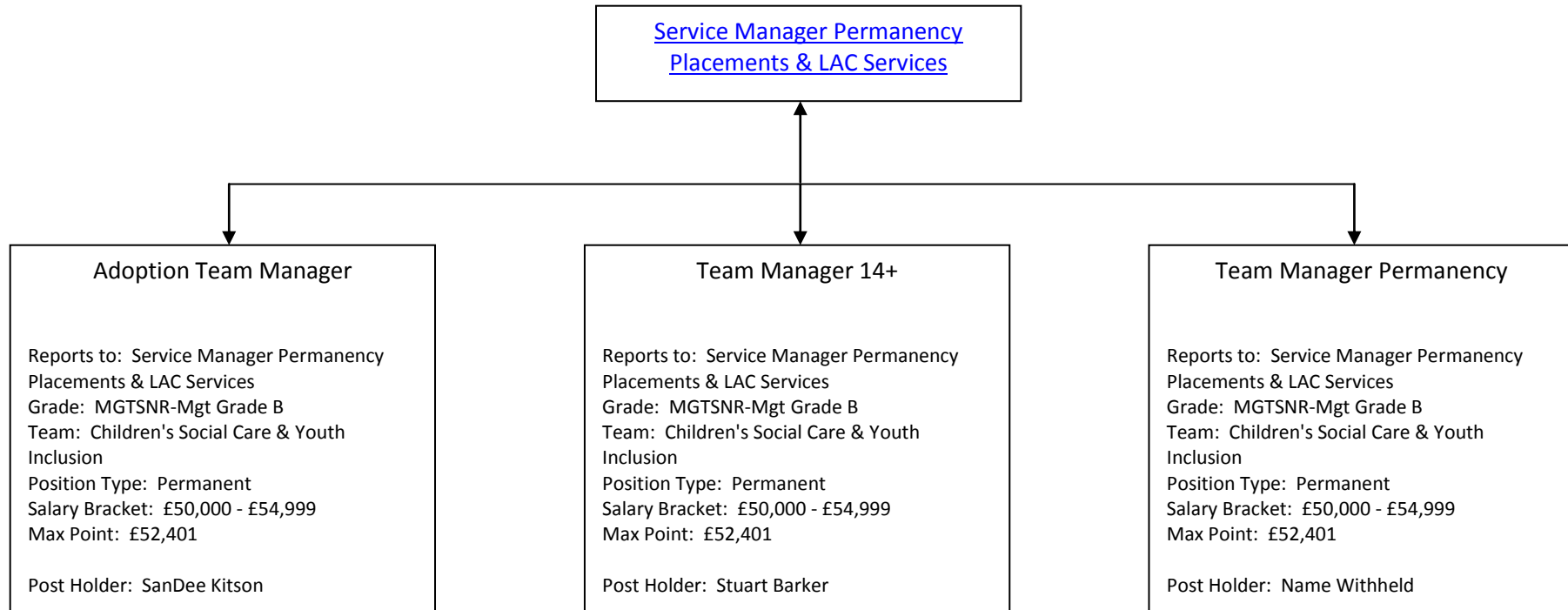
Contact Number: 0208 274 4901

[Assistant Director of Children's Social
Care & Youth Inclusion](#)



Third Tier Management Chart
Department: Children Schools and Families
Team: Children's Social Care & Youth Inclusion

Contact Number: 0208 274 4901



Third Tier Management Chart
Department: Children Schools and Families
Team: Children's Social Care & Youth Inclusion

Contact Number: 0208 274 4901

[Service Manager Social Work
Intervention Services](#)

**Team Manager Safeguarding & Care
Planning**

Reports to: Service Manager Social Work
Intervention Services
Grade: MGTSNR-Mgt Grade B
Team: Children's Social Care & Youth
Inclusion
Position Type: Permanent x3
Salary Bracket: £50,000 - £54,999
Max Point: £52,401

Post Holder: Name Withheld x3

Deputy Service Manager

Reports to: Service Manager Social Work
Intervention Services
Grade: MGTSNR-Mgt Grade C
Team: Children's Social Care & Youth
Inclusion
Position Type: Permanent
Salary Bracket: £50,000 - £54,999
Max Point: £57,273

Post Holder: Nicole Miller

**Team Manager Safeguarding & Care
Planning**

Reports to: Service Manager Social Work
Intervention Services
Grade: MGTSNR-Mgt Grade B
Team: Children's Social Care & Youth
Inclusion
Position Type: Agency Worker
Salary Bracket: £ - £
Max Point: £52,401

Post Holder: Agency Worker

Third Tier Management Chart
Department: Children Schools and Families
Team: Children's Social Care & Youth Inclusion

Contact Number: 0208 274 4901

[Service Manager MASH & Child Protection](#)

Team Manager Family Support & Assessment

Reports to: Service Manager MASH & Child Protection
Grade: MGTSNR-Mgt Grade B
Team: Children's Social Care & Youth Inclusion
Position Type: Permanent
Salary Bracket: £50,000 - £54,999
Max Point: £52,401

Post Holder: Norma Page

Team Manager MASH

Reports to: Service Manager MASH & Child Protection
Grade: MGTSNR-Mgt Grade B
Team: Children's Social Care & Youth Inclusion
Position Type: Permanent
Salary Bracket: £50,000 - £54,999
Max Point: £52,401

Post Holder: Lorraine Marshall

Team Manager Vunerable Children

Reports to: Service Manager MASH & Child Protection
Grade: MGTSNR-Mgt Grade B
Team: Children's Social Care & Youth Inclusion
Position Type: Permanent
Salary Bracket: £50,000 - £54,999
Max Point: £52,401

Post Holder: Clara Masenda

Third Tier Management Chart
Department: Children Schools and Families
Team: Commissioning, Strategy and Performance Division

Contact Number: 0208 274 4901

[Assistant Director of Commissioning
Strategy & Performance](#)

Service Manager Access to Resources

Reports to: Assistant Director of C S & P
Grade: MGTSNR-Mgt Grade 2
Team: Commissioning, Strategy and
Performance Division
Position Type: Permanent
Salary Bracket: £70,000 - £74,999
Max Point: £72,075

Post Holder: Liz Broughton

**Service Manager Contracts & School
Organisation**

Reports to: Assistant Director of C S & P
Grade: MGTSNR-Mgt Grade 2
Team: Commissioning, Strategy and
Performance Division
Position Type: Permanent
Salary Bracket: £70,000 - £74,999
Max Point: £72,075

Post Holder: Tom Procter

Service Manager CSF Commissioning

Reports to: Assistant Director of C S & P
Grade: MGTSNR-Mgt Grade 2
Team: Commissioning, Strategy and
Performance Division
Position Type: Permanent
Salary Bracket: £55,000 - £59,999
Max Point: £72,075

Post Holder: Name Withheld

**Service Manager Policy Planning &
Performance**

Reports to: Assistant Director of C S & P
Grade: MGTSNR-Mgt Grade 2
Team: Commissioning, Strategy and
Performance Division
Position Type: Permanent
Salary Bracket: £65,000 - £69,999
Max Point: £72,075

Post Holder: Name Withheld

Commissioning Manager

Reports to: Service Manager CSF
Commissioning
Grade: MGTSNR-Mgt Grade B
Team: Commissioning, Strategy and
Performance Division
Position Type: Permanent
Salary Bracket: £50,000 - £54,999
Max Point: £52,401

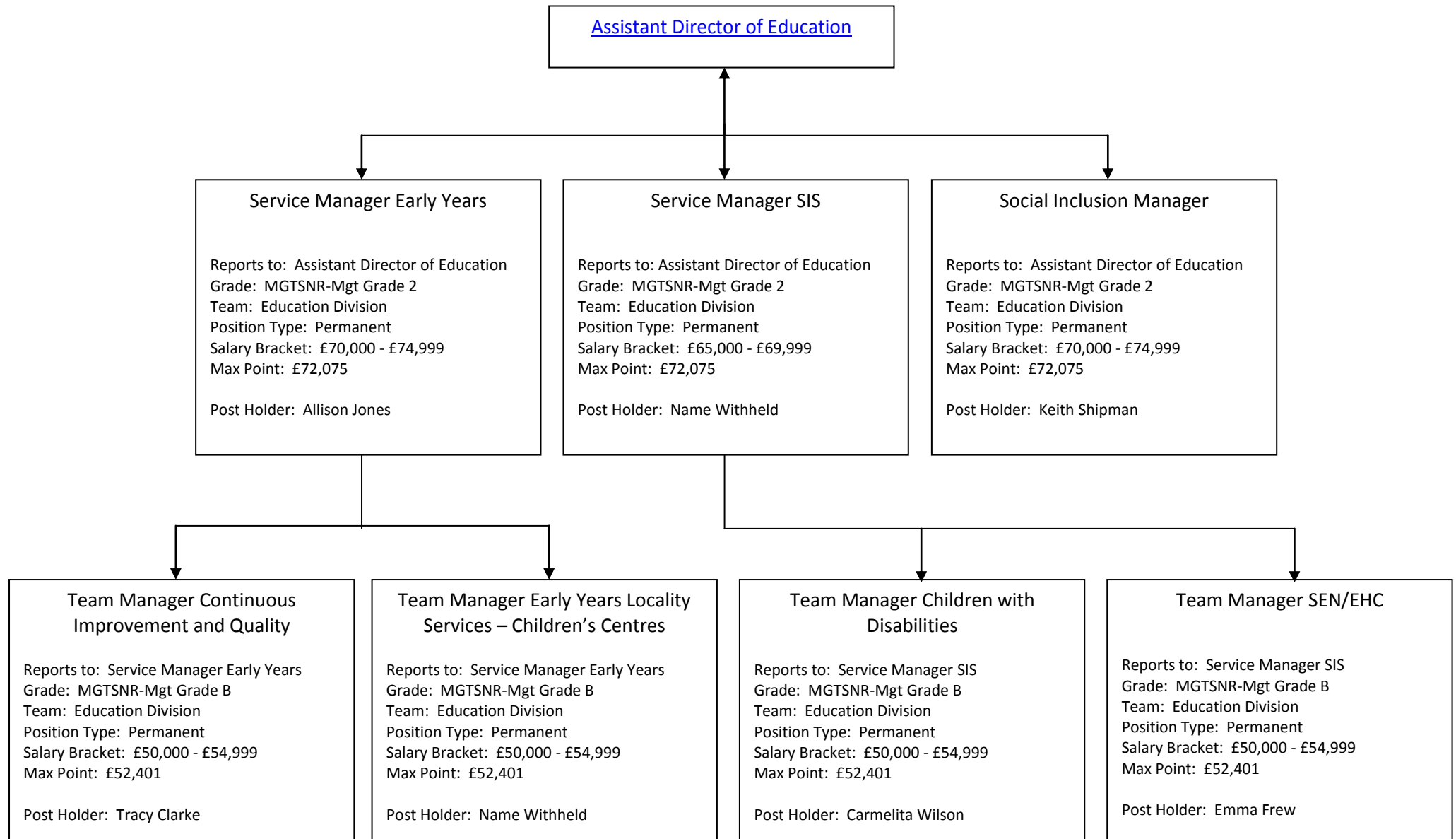
Post Holder: Name Withheld

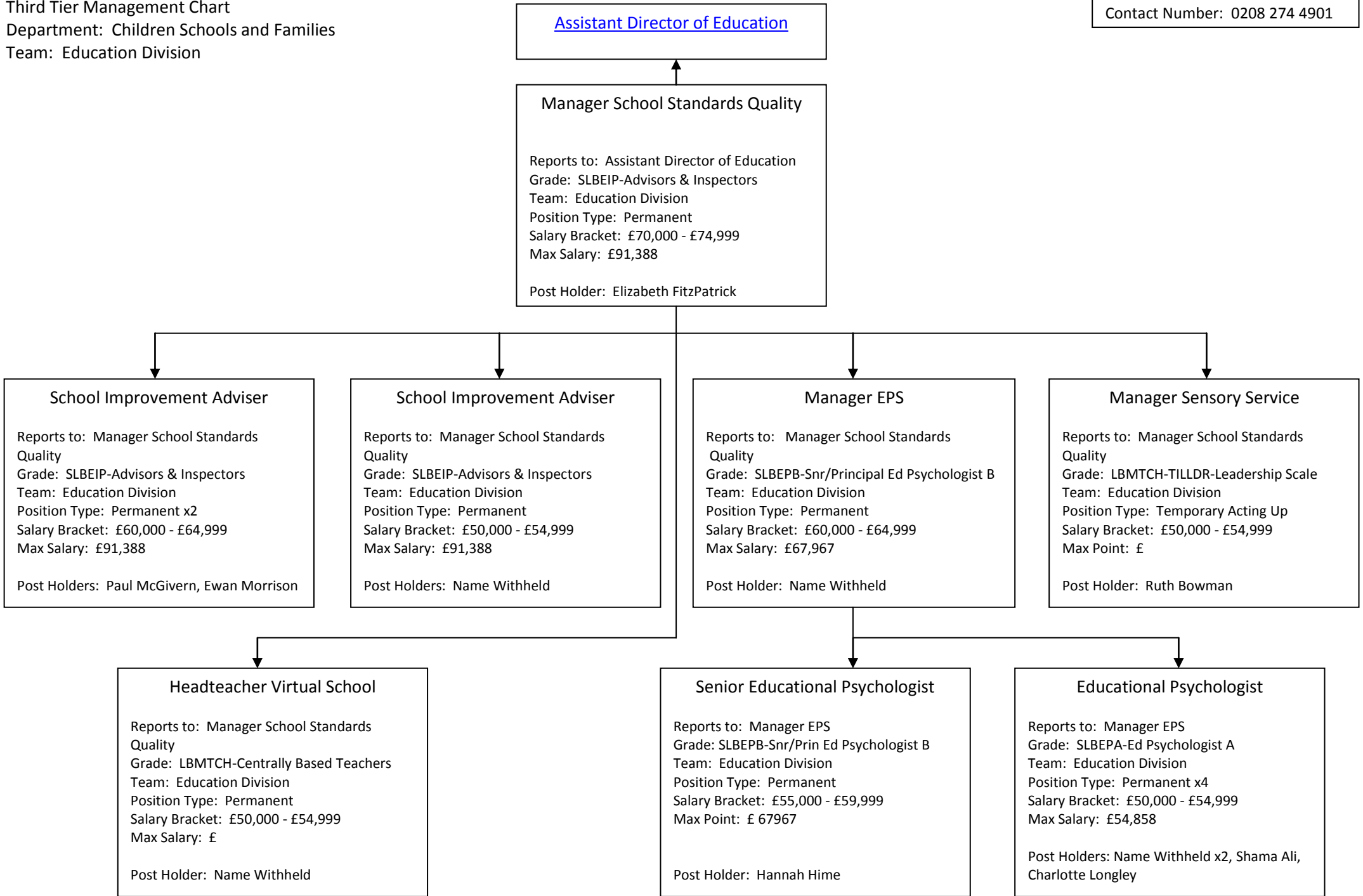
Commissioning Manager

Reports to: Service Manager CSF
Commissioning
Grade: MGTSNR-Mgt Grade B
Team: Commissioning, Strategy and
Performance Division
Position Type: Permanent
Salary Bracket: £50,000 - £54,999
Max Point: £52,401

Post Holder: Name Withheld

Contact Number: 0208 274 4901





Third Tier Management Chart
Department: Children Schools and Families
Team: Education Division

Contact Number: 0208 274 4901

[Social Inclusion Manager](#)

School Inclusion Co-Ordinator

Reports to: Social Inclusion Manager
Grade: LBMTCH-TILLDR-Leadership Scale
Team: Education Division
Position Type: Permanent
Salary Bracket: £50,000 - £54,999
Max Point: £

Post Holder: Bev Selway

Case Work Manager - VBS

Reports to: Social Inclusion Manager
Grade: LBMTCH-TILLDR-Leadership Scale
Team: Education Division
Position Type: Temporary
Salary Bracket: £50,000 - £54,999
Max Point: £

Post Holder: Mary Williams

Speech & Language Therapist

Reports to: Social Inclusion Manager
Grade: SLBEIP-Advisors & Inspectors
Team: Education Division
Position Type: Permanent
Salary Bracket: £50,000 - £54,999
Max Point: £

Post Holder: Gwen Lancaster

Post Threshold Teacher

Reports to: Social Inclusion Manager
Grade: LBMTCH-Centrally Based Teachers
Team: Education Division
Position Type: Permanent
Salary Bracket: £50,000 - £54,999
Max Point: £50,440

Post Holder: Name Withheld

Third Tier Management Chart
Department: Children Schools and Families
Team: Education Division

Contact Number: 0208 274 4901

[Headteacher Virtual School](#)



Teacher Virtual School

Reports to: Headteacher Virtual School
Grade: LBMTCH-Centrally Based Teachers
Team: Education Division
Position Type: Permanent
Salary Bracket: £50,000 - £54,999
Max Salary: £50,847
Post Holder: Name Withheld

Third Tier Management Chart
Department: Children Schools and Families
Team: Education Division

Contact Number: 0208 274 4901

